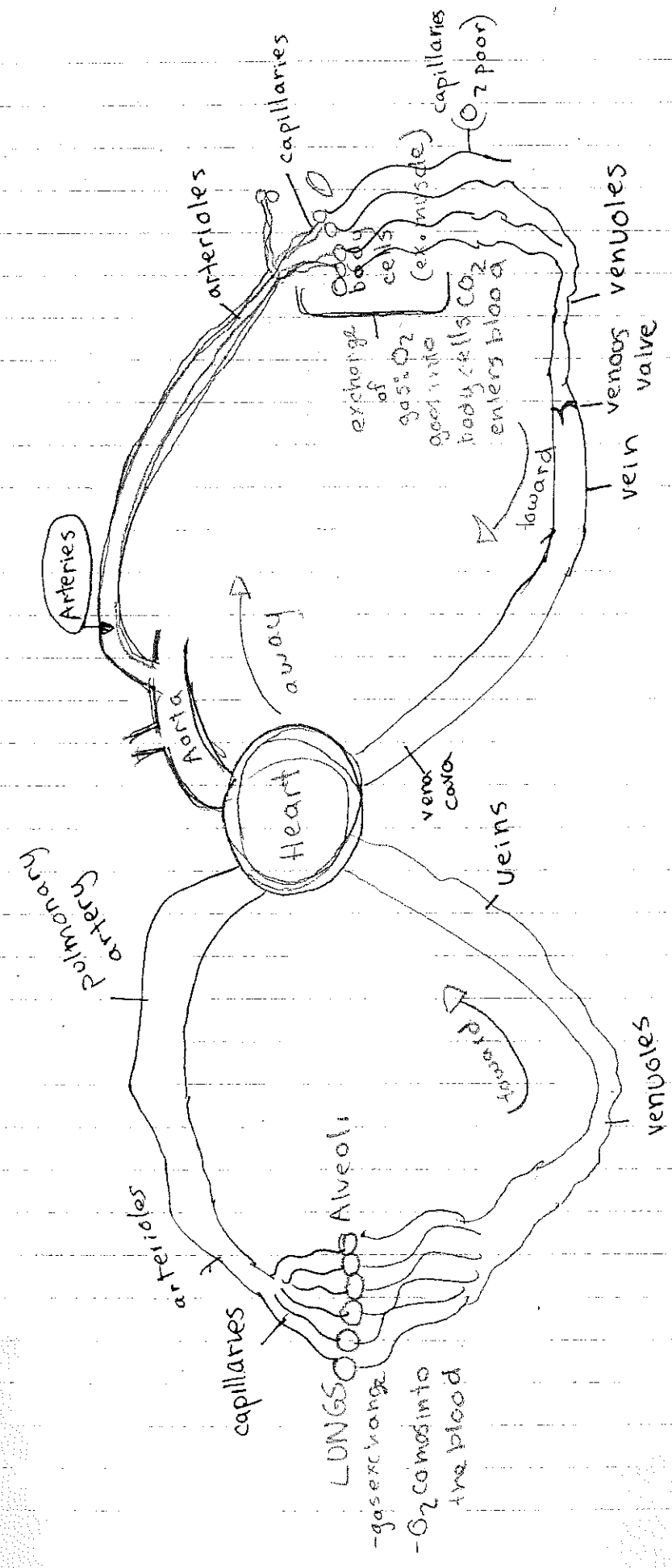


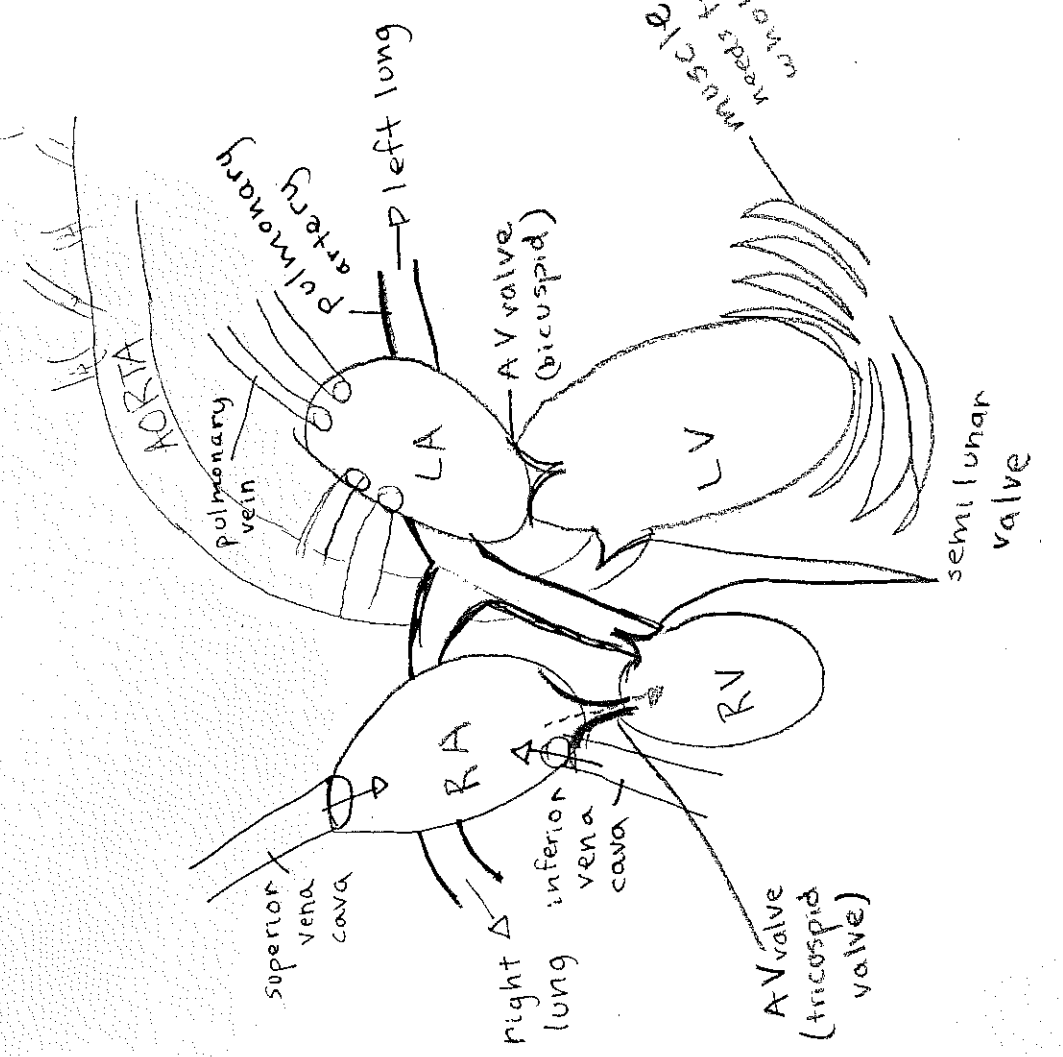
Circulatory System is made of two circuits: 1. systemic circuit → pumps blood to the whole body  
 2. Pulmonary circuit → pumps back/forth to/from lungs.

systemic circuit

pulmonary circuit



systemic arteries



- RA = right atrium
- RV = right ventricle
- LA = left atrium
- LV = left ventricle

Blood goes into atriums.

Ventricles pump blood out

AV = atrioventricular

